



秋田微电子

AVDISPLAY

深圳市秋田微电子股份有限公司

地址：深圳市龙岗区园山街道办荷坳金源工业区金源路 39 号

电话:(086)0755-88860696

传真: (086)0755 -26911092

网址: <http://www.av-display.com.cn>

SHENZHEN AV-DISPLAY CO.,LTD

ADDRESS: No. 39, Jinyuan Road, He'ao Jinyuan Industrial Zone, Yuanshan, Long Gang, Shenzhen, China

TEL: (086)0755-88860696

FAX: (086)0755-26911092

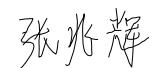


WEB: <http://www.av-display.com.cn>

SPECIFICATION FOR TFT MODULE

MODULE NO. : AVD-TT70WV-NN-002-S

CUSTOMER NO. :

Rev No. : 0

AVD	PREPARED BY	CHECKED BY	APPROVED BY
SIGNATURE			
DATE	2019.07.11	2019.07.11	2019.07.11

CUSTOMER APPROVAL	SIGNATURE	DATE

Notes :

- 1、 Please contact AVD before assigning your product based on this module specification.
- 2、 To improve the quality of product, and this product specification is subject to change without any notice.

REVISION RECORD

Rev No.	Rev date	Contents	Remarks
0	2019-07-11	First release	Preliminary

CONTENTS

1. GENERAL INFORMATION.....	3
2. ABSOLUTE MAXIMUM RATINGS.....	3
3. ELECTRICAL CHARACTERISTICS.....	4
4. BACKLIGHT CHARACTERISTICS.....	4
5. EXTERNAL DIMENSIONS.....	5
6. ELECTRO-OPTICAL CHARACTERISTICS.....	6
7. INTERFACE DESCRIPTION.....	8
8.AC CHARACTERISTICS.....	9
9. POWER SEQUENCE.....	13
10. RELIABILITY TEST CONDITIONS.....	14
11.INSPECTION CRITERION.....	15
12. HANDLING PRECAUTIONS.....	15
13. PRECAUTION FOR USE.....	16
14. PACKING SPECIFICATION.....	16
15. INITIALIZATION CODE.....	16
16. HSF COMPLIANCE.....	16

1. GENERAL INFORMATION

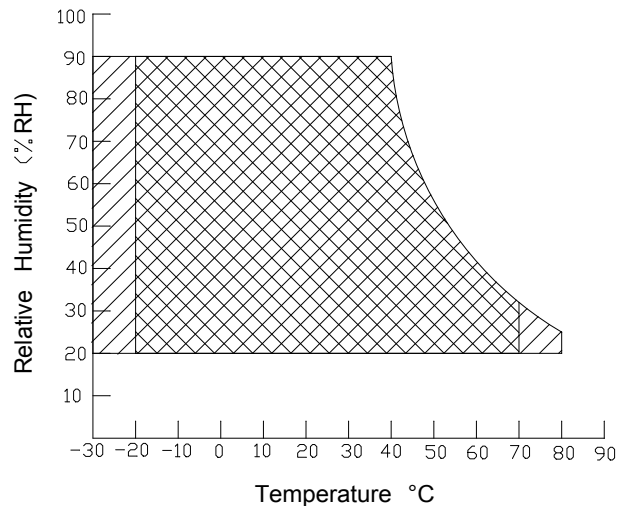
No.	Item	Contents	Unit
1	LCD size	7.0 inch (Diagonal)	/
2	Display mode	TN/Normally white/Transmissive	/
3	Viewing direction(eye)	12 O'clock	/
4	Gray scale inversion direction	6 O'clock	/
5	Resolution(H*V)	800 *480 Pixels	/
6	Module size (L*W*H)	164.90*100.00*3.50	mm
7	Active area (L*W)	153.84*85.632	mm
8	Pixel pitch (L*W)	0.1923*0.1784	mm
9	Interface type	RGB 24bit interface	/
10	Color Depth	16.7M	/
11	Module power consumption	1.126(Approx)	W
12	Back light type	LED	/
13	Driver IC	EK9716BD4+EK73002AB2 OR COMPATIBLE	/
14	Weight	115.0(Approx)	g

2. ABSOLUTE MAXIMUM RATINGS

Item	Symbol	Min.	Max.	Unit	Note
Power supply input voltage for TFT	VDD	-0.3	3.6	V	
Backlight current (normal temp.)	ILED	-	150	mA	
Operation temperature	Top	-20	+70	°C	Note1
Storage temperature	Tst	-30	+80	°C	Note1
Humidity	RH	-	90%	RH	Note1

Note1 :

- 1).The relative humidity and temperature range are as below sketch,90%RH Max.
- 2).The maximum wet bulb temperature $\cong 40^{\circ}\text{C}$ and without dewing.



Operating Range  Storage Range  + 

3. ELECTRICAL CHARACTERISTICS

DC CHARACTERISTICS(at Ta=25°C)

Item	Symbol	Min.	Typ.	Max.	Unit	Note
Power supply input voltage	VDD	3.0	3.3	3.6	V	
I/O logic voltage	VDDIO	-	-	-	V	
Input voltage 'H' level	VIH	0.7VDDIO	-	VDDIO	V	
Input voltage 'L' level	VIL	VSS	-	0.3VDDIO	V	
Power supply current	IVDD	-	14	-	mA	
TFT gate on voltage	VGH	17.0	18.0	19.0	V	
TFT gate off voltage	VGL	-8.8	-7.8	-6.8	V	
Analog power supply voltage	AVDD	-	10.13	-	V	
Differential input common mode voltage	Vcom	~2.8	~3.8	~4.8	V	Note1

Note1 : The value is just the reference value. The customer can optimize the setting value by the different D-IC
 Vcom must be adjusted to optimize display quality, as Crosstalk and Contrast Ratio etc..

4. BACKLIGHT CHARACTERISTICS

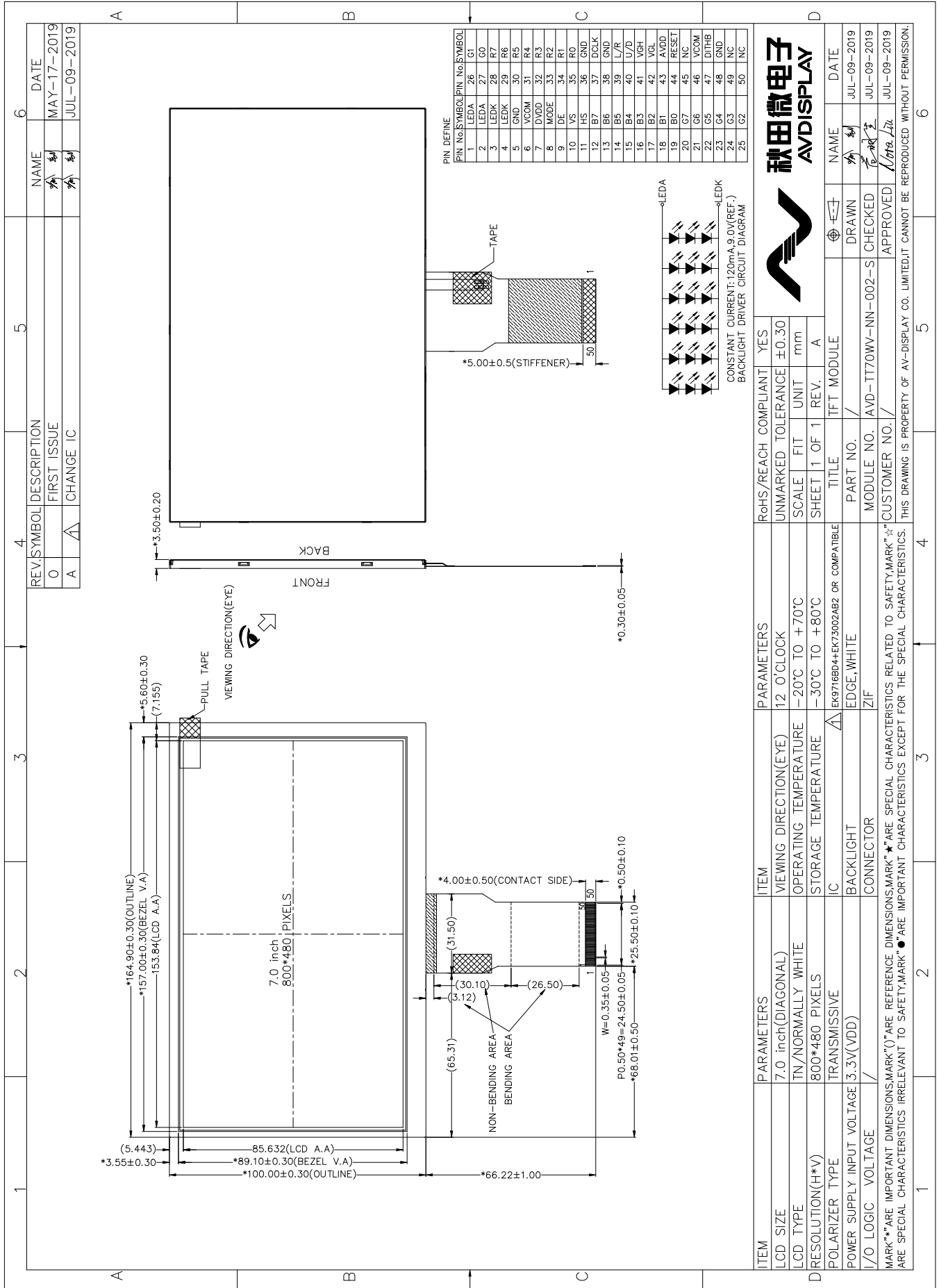
(at Ta=25°C,RH=60%)

Item	Symbol	Min.	Typ.	Max.	Unit	Note
LED forward voltage	VF	-	9.0	9.6	V	IF=20*6mA
LED forward current	IF	-	120	-	mA	
LED power consumption	PLED	-	1.08	-	W	Note1
Number of LED	-		18		PCS	
Connection mode	-	3 in series 6 in parallel			/	
LED life-time	-	20000	-	-	Hrs	Note2

Note1 : Calculator value for reference : IF*VF = PLED

Note2 : The LED life-time define as the estimated time to 50% degradation of initial brightness at Ta=25°C and IF =120mA. The LED lifetime could be decreased if operating IF is larger than 120mA.

5. EXTERNAL DIMENSIONS



6. ELECTRO-OPTICAL CHARACTERISTICS

Item	Symbol	Condition	Min.	Typ.	Max.	Unit	Remark	Note
Response time	Tr+ Tf	-	-	30	60	ms	FIG.1	Note 1
Contrast ratio	Cr		-	500	-	-	FIG.2	Note 2
Surface luminance	Lv	$\theta=0^\circ$	200	280	-	cd/m ²	FIG.2	Note 3
Luminance uniformity	Yu	$\theta=0^\circ$	70	80	-	%	FIG.2	Note 4
NTSC	-	$\theta=0^\circ$	-	50	-	%	FIG.2	Note 5
Viewing angle	θ	$\varnothing=90^\circ$	60	70	-	deg	FIG.3	Note 6
		$\varnothing=270^\circ$	40	50	-	deg	FIG.3	
		$\varnothing=0^\circ$	60	70	-	deg	FIG.3	
		$\varnothing=180^\circ$	60	70	-	deg	FIG.3	
CIE (x,y) chromaticity	Red x	$\theta=0^\circ$ $\varnothing=0^\circ$ Ta=25°C	Typ -0.04	0.57	Typ +0.04	-	FIG.2 CIE1931	Note 5
	Red y			0.33		-		
	Green x			0.35		-		
	Green y			0.60		-		
	Blue x			0.16		-		
	Blue y			0.11		-		
	White x			0.31		-		
	White y			0.34		-		

Note1. Definition of response time

The response time is defined as the LCD optical switching time interval between “White” state and “Black” state. Rise time (T_{ON}) is the time between photo detector output intensity changed from 90% to 10%. And fall time (T_{OFF}) is the time between photo detector output intensity changed from 10% to 90%. For additional information see FIG.1.

Note2. Definition of contrast ratio

Contrast ratio(Cr) is defined mathematically by the following formula. For more information see FIG.2.

$$\text{Contrast ratio} = \frac{\text{Luminance measured when LCD on the "White" state}}{\text{Luminance measured when LCD on the "Black" state}}$$

Measured at the center area of the LCD

Note3. Definition of surface luminance

Surface luminance is the luminance with all pixels displaying white. For more information see FIG.2.

$$L_v = \text{Average Surface Luminance with all white pixels}(P_1, P_2, P_3, \dots, P_n)$$

Note4. Definition of luminance uniformity

The luminance uniformity in surface luminance is determined by measuring luminance at each test position 1 through n, and then dividing the maximum luminance of n points luminance by minimum luminance of n points luminance. For more information see FIG.2.

$$Y_u = \frac{\text{Minimum surface luminance with all white pixels}(P_1, P_2, P_3, \dots, P_n)}{\text{Maximum surface luminance with all white pixels}(P_1, P_2, P_3, \dots, P_n)}$$

Note5. Definition of color chromaticity (CIE1931)

CIE (x,y) chromaticity, The x,y value is determined by screen active area center position P5. For more information see FIG.2.

Note6. Definition of viewing angle

Viewing angle is the angle at which the contrast ratio is greater than 10. angles are determined for the horizontal or x axis and the vertical or y axis with respect to the z axis which is normal to the LCD surface. For more information see FIG.3.

For viewing angle and response time testing, the testing data is base on Autronic-Melchers's ConoScope or DMS series Instruments or compatible. For contrast ratio, Surface Luminance, Luminance uniformity and CIE, the testing data is base on TOPCON's BM-5or BM-7 photo detector or compatible.

FIG.1. The definition of response Time

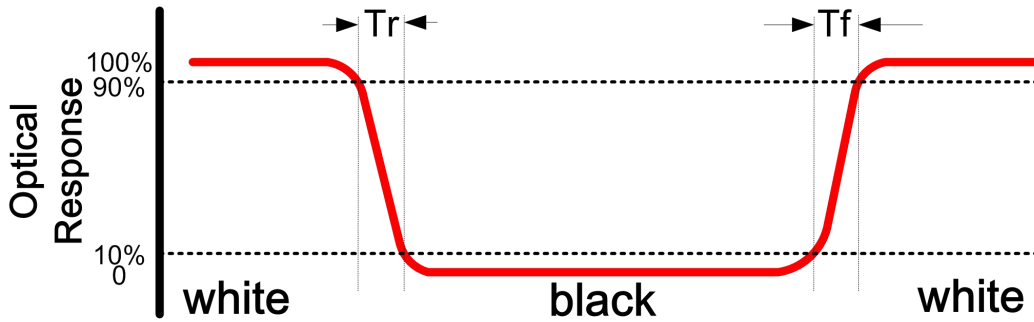


FIG.2. Measuring method for contrast ratio, surface luminance, luminance uniformity, CIE (x,y) chromaticity

H,V : Active area

Light spot size $\varnothing = 5\text{mm}$ (BM-5) or $\varnothing = 7.7\text{mm}$ (BM-7)50cm distance or compatible distance from the LCM surface to detector lens.

Test spot position : see Figure a.

measurement instrument : TOPCON's luminance meter BM-5 or BM-7 or compatible ,see Figure b.

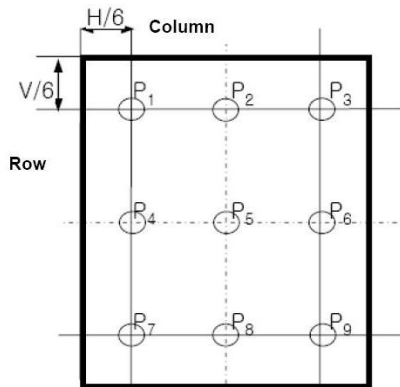


Figure a

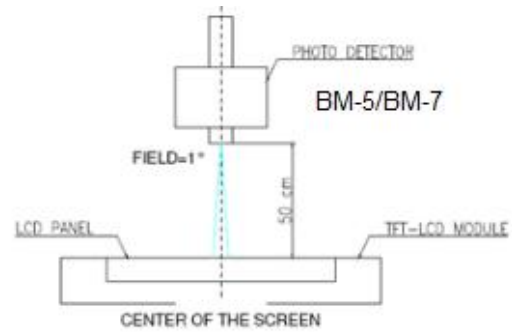
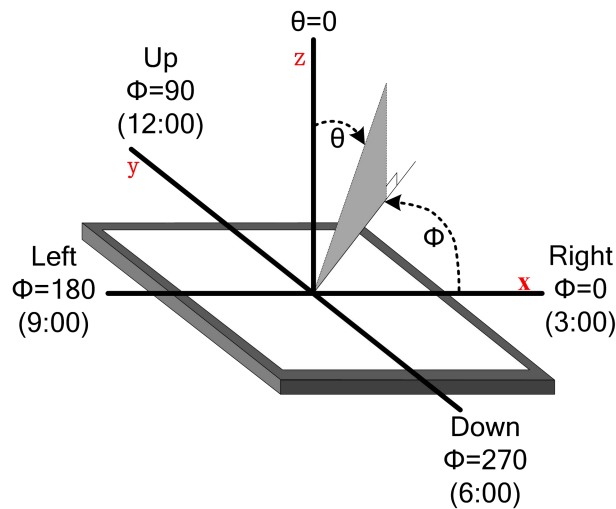


Figure b

FIG.3. The definition of viewing angle





7. INTERFACE DESCRIPTION

Module Interface description

Interface No.	Name	I/O or connect to	Description
1-2	LEDA	P	Power for LED backlight(Anode)
3-4	LEDK	P	Power for LED backlight(Cathode)
5	GND	P	Power Ground
6	VCOM	I	For external VCOM DC input(Optional)
7	DVDD	P	Digital Power,
8	MODE	I	DE/SYNC mode select .normally pull high MODE="1"----DE mode MODE="0"----SYNC mode
9	DE	I	Data Enable signal ;normally pull low
10	VS	I	Vertical sync input.Negative polarity
11	HS	I	Horizontal sync input.Negative polarity
12-19	B7-B0	I	Blue data
20-27	G7-G0	I	Green data
28-35	R7-R0	I	Red data(MSB)
36	GND	P	Power Ground
37	DCLK	I	Clock input ;default falling edge
38	GND	P	Power Ground
39	L/R	I	Source right or left sequence control.L/R="H"---left to right; L/R="L"---right to left
40	U/D	I	gate up or down scan control. U/D="L"---up to down; U/D="H"---down to up
41	VGH	P	Gate ON voltage
42	VGL	P	Gate OFF voltage
43	AVDD	P	Analog Power
44	RESET	I	Reset signal; suggest connect with RC circuit;low active
45	NC	/	Not connect
46	VCOM	I	For external VCOM DC input(Optional)
47	DITHB	I	Dithering setting: DITH="H" 6bit resolution (last 2 bits of input data truncated) (default setting) DITH="L" 8bit resolution
48	GND	P	Power Ground
49-50	NC	/	Not connect



8.AC CHARACTERISTICS

(TA = -20 to 85°C, VDD = 1.71 to 3.6V, VDDA = 6.5 to 13.5V, VSS = VSSA = 0V)

Parameter	Symbol	Condition	Min.	Typ.	Max.	Unit
VDD Power On Slew rate	T _{POr}	From 0V to 90% VDD	-	-	20	ms
RSTB pulse width	T _{RST}	CLKIN = 50MHz	50	-	-	us
CLKIN cycle time	T _{cph}	-	20	-	-	ns
CLKIN pulse duty	T _{cwh}	-	40	50	60	%
VSD setup time	T _{vst}	-	8	-	-	ns
VSD hold time	T _{vhd}	-	8	-	-	ns
HSD setup time	T _{hst}	-	8	-	-	ns
HSD hold time	T _{hhd}	-	8	-	-	ns
Data set-up time	T _{dsu}	DR[7:0], DG[7:0], DB[7:0] to CLKIN	8	-	-	ns
Data hold time	T _{dhd}	DR[7:0], DG[7:0], DB[7:0] to CLKIN	8	-	-	ns
DEN setup time	T _{esu}	-	8	-	-	ns
DEN hold time	T _{ehd}	-	8	-	-	ns
Output stable time	T _{sst}	10% to 90% target voltage. CL=120pF, R=10K ohm	-	-	6	us

Parallel 24-bit RGB Mode

Parameter	Symbol	Condition	Min.	Typ.	Max.	Unit
CLKIN Frequency	F _{clk}	VDD = 1.71V~3.6V	-	40	50	MHz
CLKIN Cycle Time	T _{clk}	-	20	25	-	ns
CLKIN Pulse Duty	T _{cwh}	T _{clk}	40	50	60	%
Time from HSD to Source Output	T _{hso}	-	-	46	-	CLKIN
Time from HSD to LD	T _{hld}	-	-	46	-	CLKIN
Time from HSD to STV	T _{hstv}	-	-	2	-	CLKIN
Time from HSD to CKV	T _{hckv}	-	-	20	-	CLKIN
Time from HSD to OEV	T _{hoev}	-	-	4	-	CLKIN
LD Pulse Width	T _{wld}	-	-	10	-	CLKIN
CKV Pulse Width	T _{wckv}	-	-	66	-	CLKIN
OEV Pulse Width	T _{woev}	-	-	74	-	CLKIN



Timing Waveform

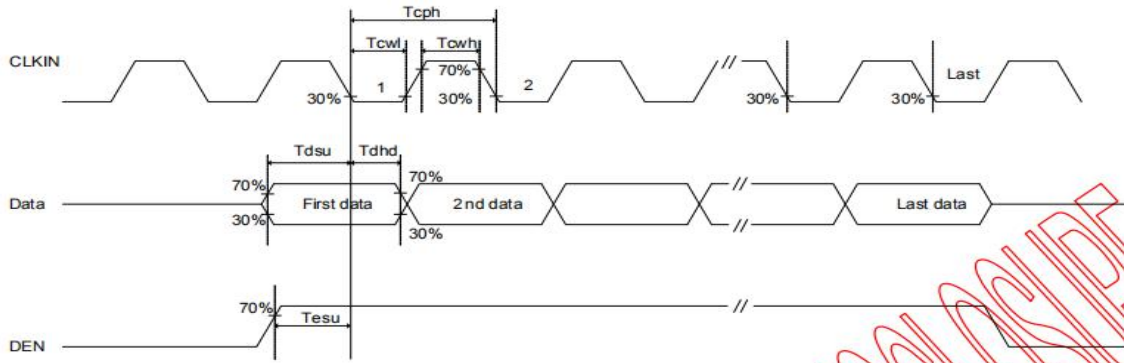


Figure 10. Input Clock and Data Timing Diagram

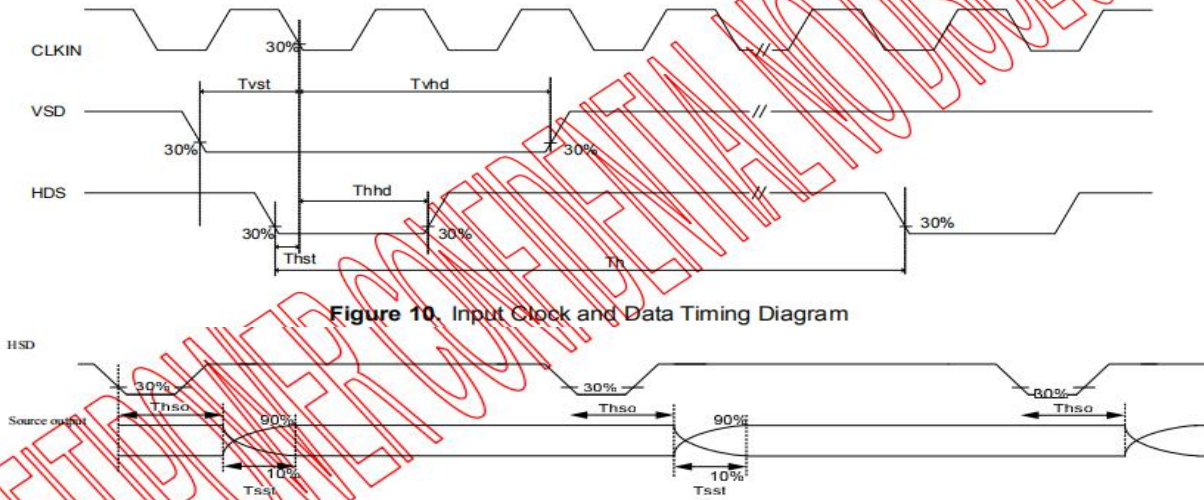


Figure 11. Source Output Timing Diagram(Cascade)

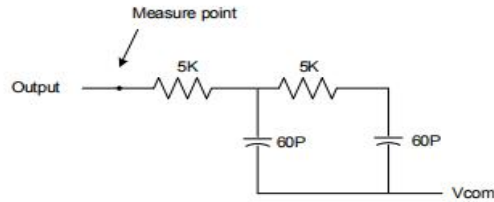


Figure 12. Output load condition

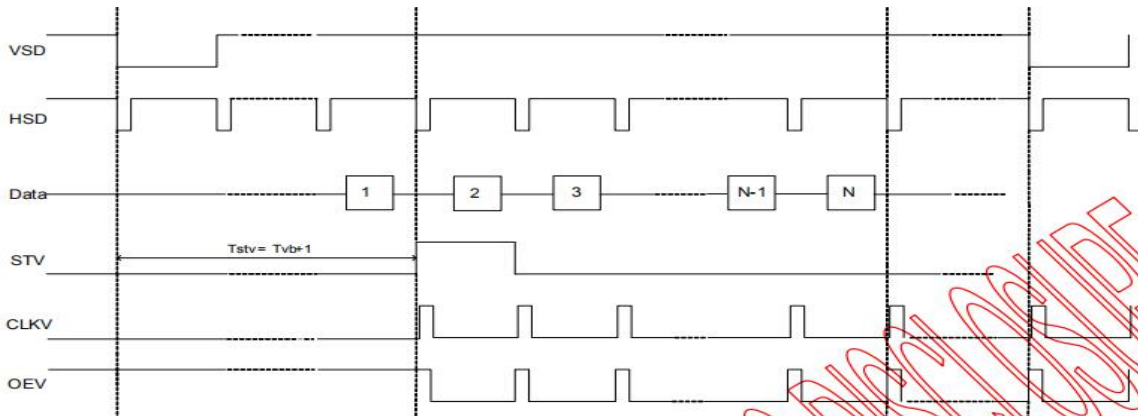


Figure 13. Vertical Timing Diagram HV (Cascade)

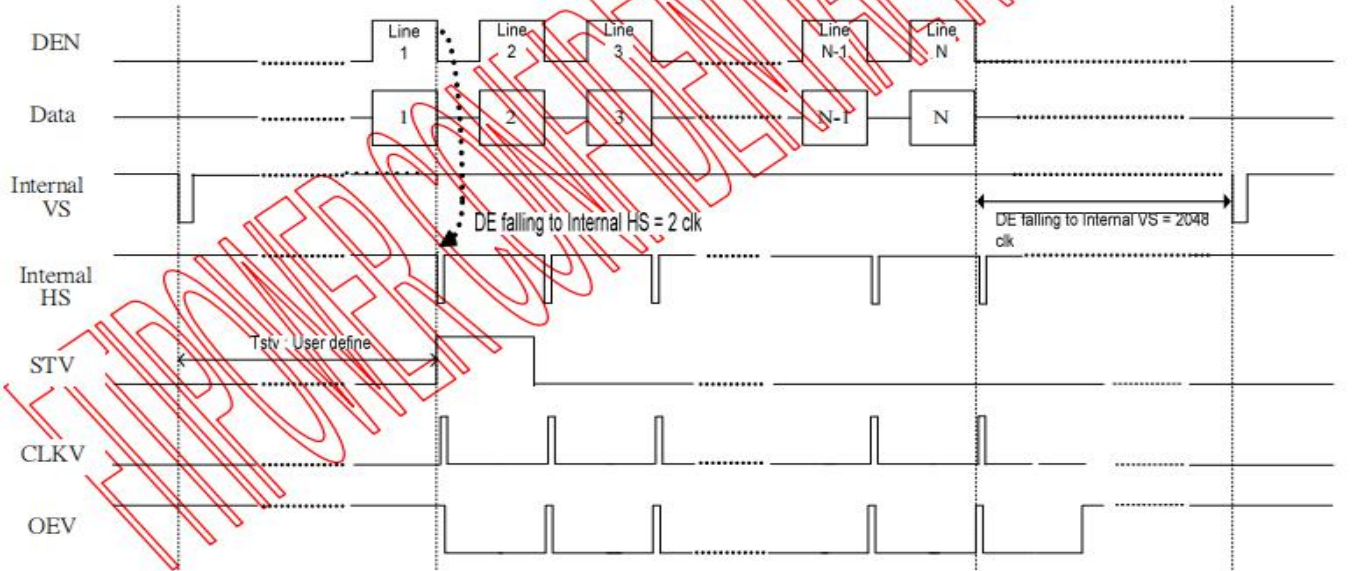


Figure 14. Vertical Timing Diagram DE (Cascade)

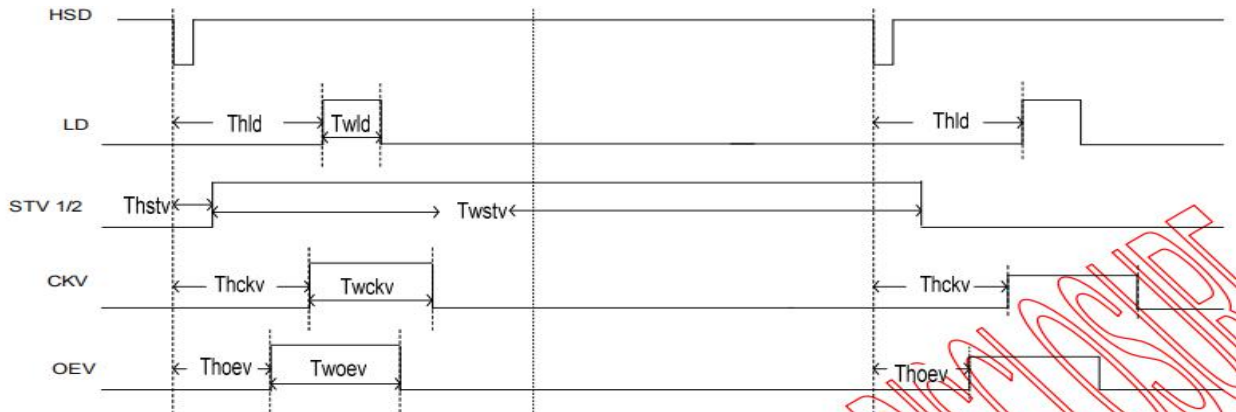


Figure 15. Gate Output Timing Diagram (Cascade)

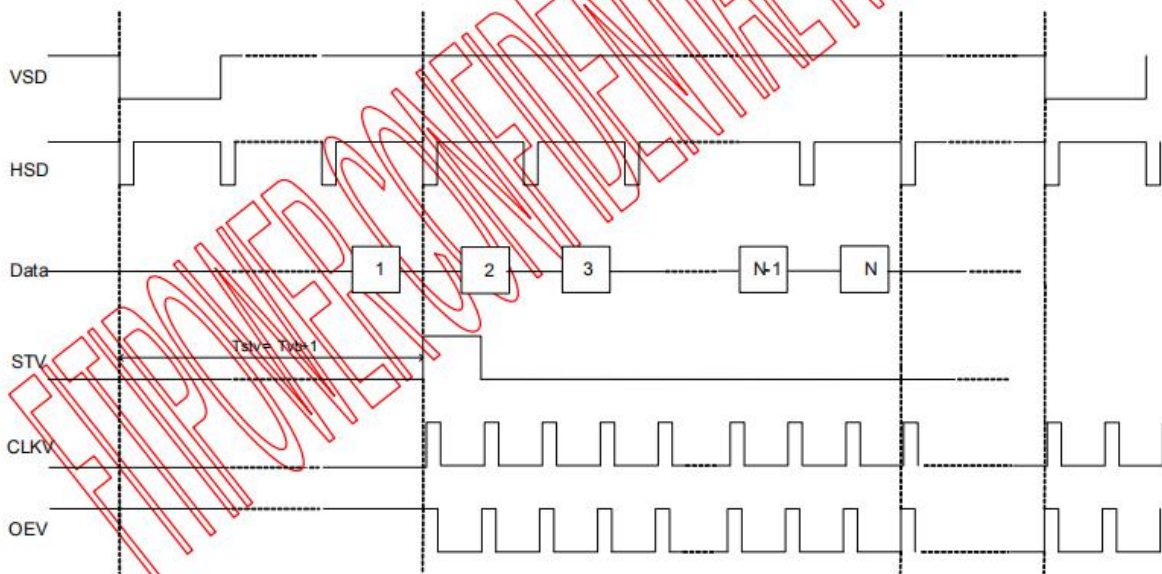


Figure 16. Vertical Timing Diagram HV (Dual Gate)

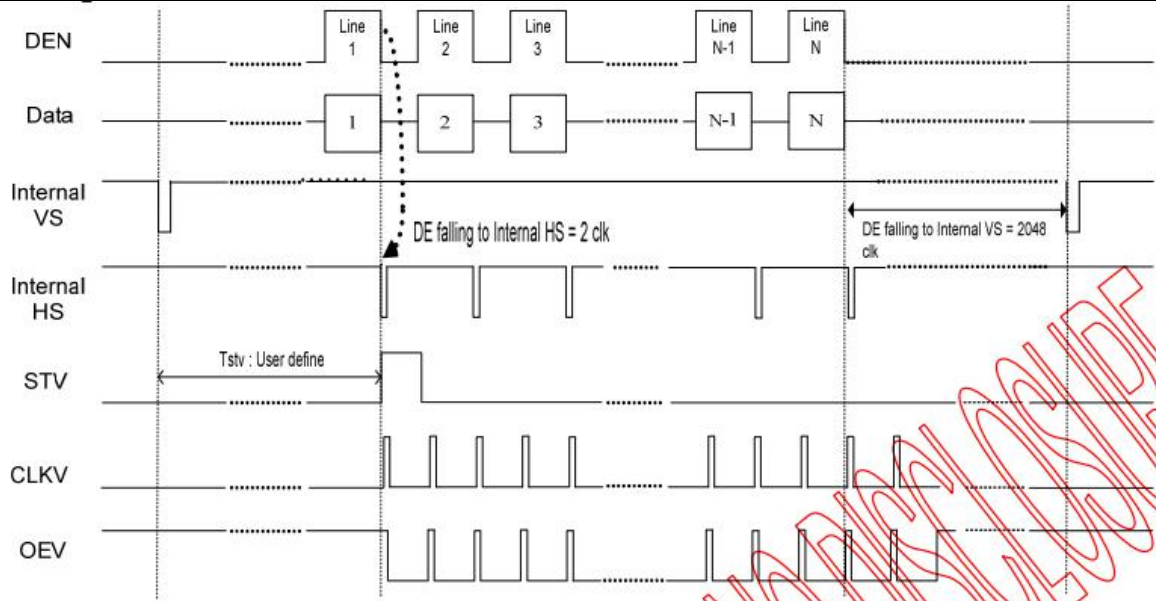


Figure 17. Vertical Timing Diagram DE (Dual Gate)

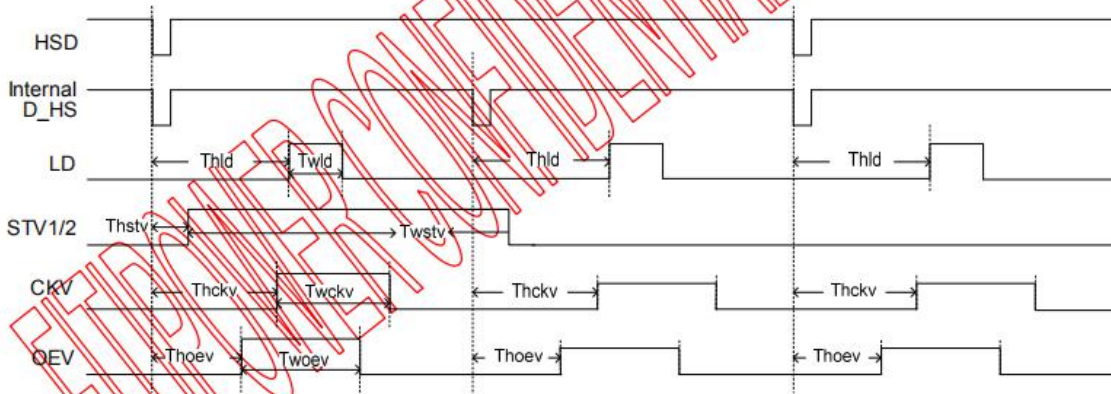


Figure 18. Gate Output Timing Diagram (Dual Gate)

9. POWER SEQUENCE

In order to prevent IC from power on reset fail, the rising time (T_{POR}) of the digital power supply VDD should be maintained within the given specifications. Refer to "AC Characteristics" for more detail on timing.

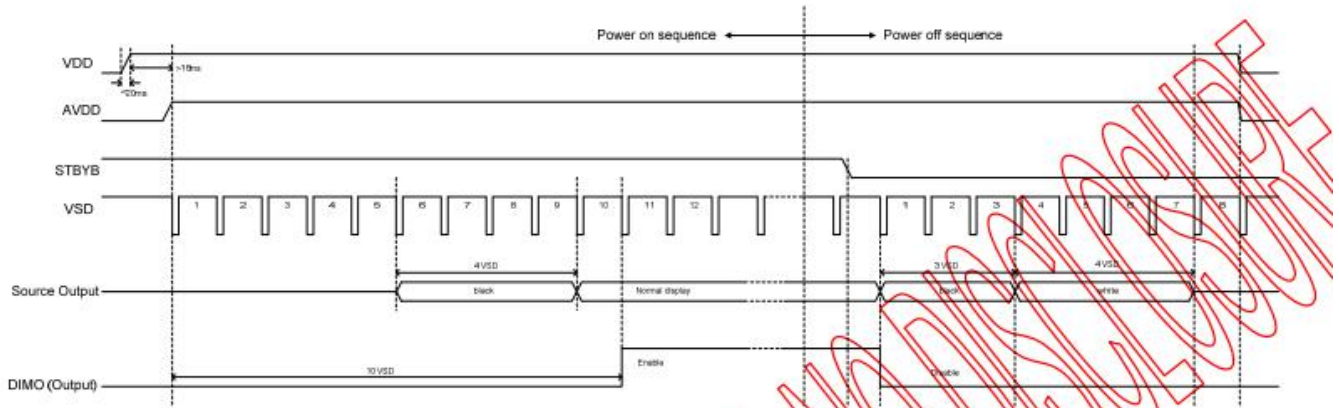


Figure 6. Power-On/Off Timing Sequence



Figure 7. Enter and Exit Standby Mode Sequence



10. RELIABILITY TEST CONDITIONS

No.	Test item	Test condition	Inspection after test	
11.1	High temperature storage test	+80°C/240 hours	Inspection after 2~4hours storage at room temperature, the sample shall be free from defects : 1.Current changing value before test and after test is 50% larger; 2. Function defect : Non-display,abnormal-display,missing lines, Short lines,I/O corrosion; 3.Visual defect : Air bubble in the LCD,Seal leak,Glass crack.	
11.2	Low temperature storage test	-30°C/240 hours		
11.3	High temperature operating test	+70°C/120 hours		
11.4	Low temperature operating test	-20°C/120 hours		
11.5	Temperature cycle storage test	-30°C ~ 25°C ~ +80°C/10cycles (30min.) (10min.) (30min.)		
11.6	High temperature high humidity test	+50°C*90% RH/120 hours		
11.7	Vibration test	Frequency : 250 r/min Amplitude : 1 inch Time: 45min		
11.8	Drop test	Drop direction: 1 corner/3 edges/6 sides 10 time		
		Packing weight(kg)		Drop height(cm)
		<11		80±1.6
		11 ≦ G < 21		60±1.2
		21 ≦ G < 31	50±1.0	
		31 ≦ G < 40	40±0.8	
11.9	ESD test	Air discharge: ±8KV, 10time Contact discharge: ±4KV, 10time		
Remark : 1.The test samples should be applied to only one test item. 2.Sample size for each test item is 3~5pcs. 3.For High temperature high humidity test, Pure water(Resistance>10MΩ) should be used. 4.In case of malfunction defect caused by ESD damage, if it would be recovered to normal state after resetting, it would be judged as a good part. 5.B/L evaluation should be excepted from reliability test with humidity and temperature: Some defects such as black spot/blemish can happen by natural chemical reaction with humidity and Fluorescence B/L has. 6.Failure judgment criterion: Basic specification, Electrical characteristic, Mechanical characteristic, Optical characteristic.				

11.INSPECTION CRITERION

Refer to 《Inspection Criterion for TFT Products-To customer》 V2.3, DOCUMENT NO.: AVD (WI) -00-QA-007

12. HANDLING PRECAUTIONS

12.1 Mounting method

The LCD module consists of two thin glass plates with polarizes which easily be damaged. And since the module in so constructed as to be fixed by utilizing fitting holes in the printed circuit board.

Extreme care should be needed when handling the LCD modules.

12.2 Caution of LCD handling and cleaning

When cleaning the display surface, Use soft cloth with solvent [recommended below] and wipe lightly :

- .Isopropyl alcohol
- .Ethyl alcohol

Do not wipe the display surface with dry or hard materials that will damage the polarizer surface.

Do not use the following solvent :

- .Water
- .Aromatics

Do not wipe ITO pad area with the dry or hard materials that will damage the ITO patterns

Do not use the following solvent on the pad or prevent it from being contaminated :

- .Soldering flux
- .Chlorine (Cl) , Sulfur (S)

If goods were sent without being silicon coated on the pad, ITO patterns could be damaged due to the corrosion as time goes on.

If ITO corrosion happen by miss-handling or using some materials such as Chlorine (Cl), Sulfur (S) from customer, Responsibility is on customer.

12.3 Caution against static charge

The LCD module use C-MOS LSI drivers, so we recommended that you :

Connect any unused input terminal to Vdd or Vss, do not input any signals before power is turned on, and ground your body, work/assembly areas, assembly equipment to protect against static electricity.

12.4 Packing

Module employ LCD elements and must be treated as such.

- .Avoid intense shock and falls from a height.
- .To prevent modules from degradation, do not operate or store them exposed direct to sunshine or high temperature/humidity.

12.5 Caution for operation

●.It is an indispensable condition to drive LCD's within the specified voltage limit since the higher voltage then the limit cause the shorter LCD life.

●.An electrochemical reaction due to direct current causes LCD's undesirable deterioration, so that the use of direct current drive should be avoided.

●.Response time will be extremely delayed at lower temperature then the operating temperature range and on the other hand at higher temperature LCD's how dark color in them. However those phenomena do not mean malfunction or out of order with LCD's, which will come back in the specified operation temperature.

●.If the display area is pushed hard during operation, some font will be abnormally displayed but it resumes normal condition after turning off once.

●.A slight dew depositing on terminals is a cause for electro-chemical reaction resulting in terminal open circuit.

●.Usage under the maximum operating temperature, 50%Rh or less is required.

●.When fixed patterns are displayed for a long time,remnant image is likely to occur.

12.6 Storage

In the case of storing for a long period of time for instance, for years for the purpose or replacement use, the following ways are recommended.

●.Storing in an ambient temperature 10°C to 30°C, and in a relative humidity of 45% to 75%. Don't expose to sunlight or fluorescent light.

●.Storing in a polyethylene bag with the opening sealed so as not to enter fresh air outside in it . And with no desiccant.

●.Placing in a dark place where neither exposure to direct sunlight nor light's keeping the storage temperature range.

- . Storing with no touch on polarizer surface by the anything else.

It is recommended to store them as they have been contained in the inner container at the time of delivery from us.

12.7 Safety

- . It is recommendable to crash damaged or unnecessary LCD's into pieces and wash off liquid crystal by either of solvents such as acetone and ethanol, which should be burned up later.
- . When any liquid leaked out of a damaged glass cell comes in contact with your hands, please wash it off well with soap and water.

13. PRECAUTION FOR USE

13.1 A limit sample should be provided by the both parties on an occasion when the both parties agreed its necessity. Judgment by a limit sample shall take effect after the limit sample has been established and confirmed by the both parties.

13.2 On the following occasions, the handing of problem should be decided through discussion and agreement between responsible of the both parties.

- . When a question is arisen in this specification.
- . When a new problem is arisen which is not specified in this specifications.
- . When an inspection specifications change or operating condition change in customer is reported to AVD, and some problem is arisen in this specification due to the change.
- . When a new problem is arisen at the customer's operating set for sample evaluation in the customer site.


14. PACKING SPECIFICATION

Please consult our technical department for detail information.

15. INITIALIZATION CODE

16. HSF COMPLIANCE

- . This products complies with ROHS 2011/65/EU and 2015/863/EU、REACH 1907/2006/EC requirements, and the packaging complies with 94-62-EC.

 AVDISPLAY		Doc. Name	Inspection Criterion for TFT Products	Ver.	V2.3
Doc. Level	Class 3	Doc. No.	AVD (WI) -00-QA-007	Page	Page 2 of 10

1. Objective

The TFT test criterion are set to formalize TFT quality standards for AVD with reference to those of the customer for inspection, release and acceptance of finished TFT products in order to guarantee the quality of TFT products required by the customer.

2. Scope

The criterion is applicable to all the TFT products manufactured by AVD.

3. Equipment for Inspection

Electrical tester, electrical testing machines, vernier calipers, microscopes, magnifiers, anti-static wrist straps, finger cots, labels, tri-phase cold and hot shock machine, constant temperature and humidity chamber, backlight table, ovens for high-low temperature experiments, refrigerators, constant voltage power supply (DC)), desk Lamps, etc.

4. Sampling Plan and Reference Standards

4.1.1 Sampling plan:

Refer to National Standard GB/T 2828.1---2012/ISO2859-1:1999, level II of normal levels:

Product Category	Consumer Electronics	Non-consumer Electronics	Industrial	Automobile
AQL	MA=0.4 MI=1.5	MA=0.4 MI=1.0	MA=0.25 MI=0.65	MA=0.15 MI=0.40

4.1.2 GB/T 2828.1---2012/ISO2859-1:1999 Sampling check procedure in count

4.1.3 GB/T 18910. Standard for LCM parts

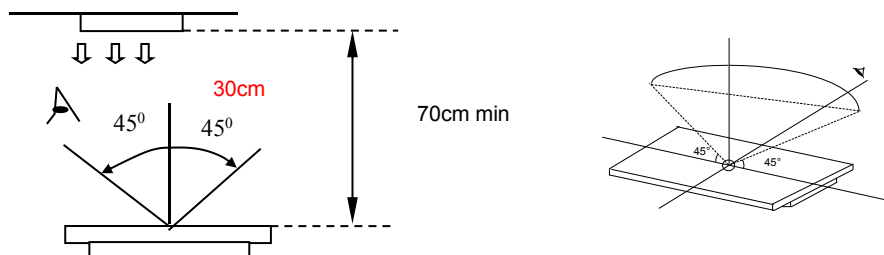
4.1.4 GB/T24213-2008 Basic Environmental Test Procedures for Electrical and Electronic Products

4.1.5 IPC-A-610E Acceptability of Electronic Assemblies

5. Inspection Conditions and Inspection Reference

5.1 Cosmetic inspection: shall be done normally at $23 \pm 5^{\circ}\text{C}$ of the ambient temperature and $45 \sim 75\% \text{RH}$ of relative humidity, under the ambient luminance between $500 \text{lux} \sim 1000 \text{lux}$ and at the distance of 30cm apart between the inspector's eyes and the LCD panel and normally in reflected light. For backlight LCM, cosmetic inspection shall be done under the ambient luminance less than 100lux with the backlight on.


5.2 The TFT shall be tested at the angle of 45° left and right and $0 \sim 45^{\circ}$ top and bottom as the following picture showing:



5.3 Definition of viewing area (VA)

A area: Active area (AA area)

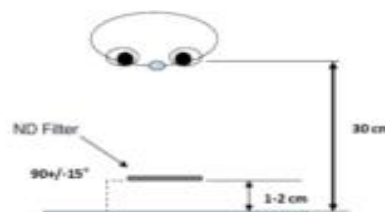
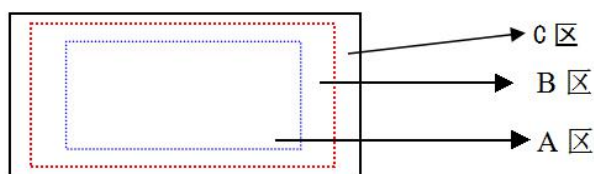
B area: Viewing area (VA area)

 AVDISPLAY		Doc. Name	Inspection Criterion for TFT Products	Ver.	V2.3
Doc. Level	Class 3	Doc. No.	AVD (WI) -00-QA-007	Page	Page 3 of 10

C area: Non-viewing area (not viewing after customer assembly)

If there is any appearance viewing defect which do not affect product quality and customer assembly in C area, it's accepted in generally.

The criteria apply to A and B area except chipping and crack.



5.4 Inspection with naked eyes(exclusive of the inspection of the physical dimensions of defects carried out with magnifiers)

5.5 ND card use method(refer to right conner image) and scope: Multi-bright dot; Mura(Black/Gray pattern uneven); dark line and so on.

5.6 Undefined items or other special items, refer to mutual agreement and limited sample. If criterion does not match product specifications/ technical requirement, both should be subject to special inspection criterion agreed by customer.


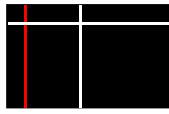

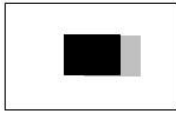
6. Defects and Acceptance Standards



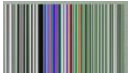

6.1 Electrical properties test

6.1.1 Test voltage(V): Refer to the instruction of testers and the product specification or drawing and the display content and parameters and display effects shall conform to the product specification and drawing.

6.1.2 Current Consumption(I): Refer to approved product specifications or drawings.

6.1.3 Function items(Defect category MA)


No.	Defects	Descriptions	Pictures	Inspection method/tools	Defect category
6.1.3.1	No display /reaction	shows no picture/display in normal connected situation.		Naked eyes/ testers	MA
6.1.3.2	Missing segment	Shows missing lines in normal display		Naked eyes/ testers	MA
6.1.3.3	Dark line	Only visible on gray pattern, 1 or more vertical/horizontal lines: 5%ND, not visible, OK	/	Naked eyes/ testers	MA
6.1.3.4	POL angle defect	Not accepted		Naked eyes/ testers	MA
6.1.3.5	Image retention (sticking)	Chess pattern stays for 30mins and change to 50% gray pattern, disappear in		Naked eyes/ testers	MA

 AVDISPLAY		Doc. Name	Inspection Criterion for TFT Products	Ver.	V2.3
Doc. Level	Class 3	Doc. No.	AVD (WI) -00-QA-007	Page	Page 4 of 10
		10s, OK; if time>10s, NG			
6.1.3.6	Flicker	Refer to Limit sample if essential or flicker value <-30dB (measured by CA310A); OK		Naked eyes/ CA310A	MA
6.1.3.7	Display abnormal	Not accepted		Naked eyes/ testers	MA
6.1.3.8	Cross-talk	Refer to limited sample		Naked eyes/ limited sample	MA
6.1.3.9	Display dim/bright	Refer to limited sample	/	Naked eyes/ limited sample	MA
6.1.3.10	Contrast	Refer to limited sample	/	Naked eyes/ limited sample	MA
6.1.3.11	Huge current	Out of spec, not accepted	/	Ammeter	MA
6.1.3.12	TP function defect	Not accepted	/	Naked eyes/ Touch/ test program	MA

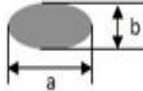
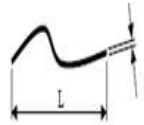
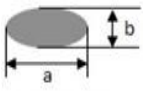
6.2 LCD dot/line defect


6.2.1 LCD pixel dot defect(defect category: MI)

Item	Inspection criterion			
	S < 5"	5 ≤ S < 10"	10 ≤ S < 15"	S ≥ 15"
Color pixel dot defect(RGB dot)	1	2	2	<u>3</u>
2 connected bright dot	0	1	1	<u>1</u>
3 connected bright dot or more	0	0	1	<u>0</u>
Bright dot quantity	1	2	3	<u>4</u>
Random dark dot quantity	2	3	4	<u>5</u>
2 connected dark dot	1	1	2	<u>2</u>
3 connected dark dot or more	0	0	0	<u>0</u>
Dark dot quantity	3	4	5	<u>6</u>
Multi-bright dot	ND 5% hidden, OK			
Remark: 2 bright dots distance DS ≥ 15mm 2 dark dots distance DS ≥ 5mm 1) Bright dot: Power on TFT and RGB dot in black display 2) Dark dot: Power on TFT and gray or black dot in RGB display 3) Multi-bright dot: Power on TFT and fluorescent tiny dot in black display(only visible in black display)				

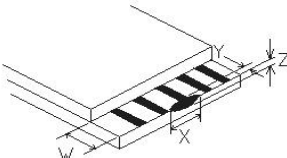
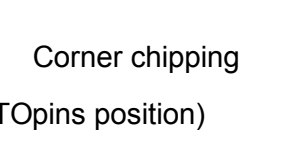
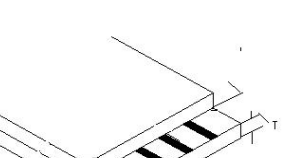
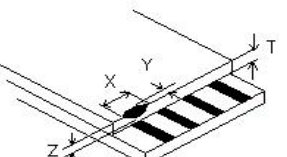
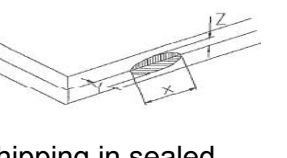
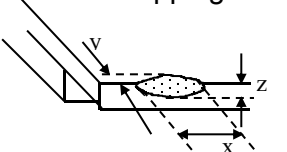
 AVDISPLAY		Doc. Name	Inspection Criterion for TFT Products	Ver.	V2.3
Doc. Level	Class 3	Doc. No.	AVD (WI) -00-QA-007	Page	Page 5 of 10


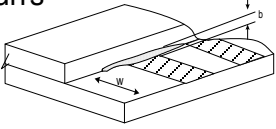
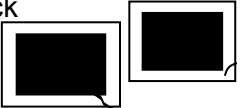
6.2.2 LCD appearance dot defect (defect category: MI)

No.	Item	Inspection criterion					Picture	Inspection method/tools	
		Size	S < 5"	5 ≤ S < 10"	10 ≤ S < 15"	S ≥ 15"			
6.2.2.1	Dot defect (black dot, white dot)	D ≤ 0.15	ignore	ignore	D ≤ 0.2; Not count	D ≤ 0.2; ignore	 D=(a+b)/2	Naked eyes /film card /magnifier	
		0.15 < D ≤ 0.25	3	3					
		0.25 < D ≤ 0.30	1	2	0.2~0.35 Q'ty ≤ 4	0.2~0.35 Q'ty ≤ 5			
		0.30 < D ≤ 0.35	0	1					
		0.35 < D ≤ 0.50	0	0	1	2			
		D > 0.5	0	0	0	0			
Remark: D ≤ 0.15mm, not count. Multi-dot as bulk is not accepted. Count dot quantity ≤ 5; 2 round dots or linear dots in 1 cm is judged as multi-dot.									
6.2.2.2	Line defect (visible when power on)	Length (mm)	Width (mm)	S < 5"	5 ≤ S < 10"	10 ≤ S < 15"	S ≥ 15"		Naked eyes /film card /magnifier
		Not count	W ≤ 0.03	Ignored	Ignored	Ignored	Ignored		
		L ≤ 5	0.03 ≤ W < 0.05	3	3	Ignored	Ignored		
		L ≤ 5	0.05 ≤ W < 0.08	0	1	3	3		
		L ≤ 8	0.05 ≤ W < 0.08	0	0	1	2		
L > 8	W ≥ 0.08	0	0	0	0				
Remark: Invisible when power on, only visible in special angle against light, show as watermark/folding/scratch but can not be touched, no control or refer to keeping sample.									
6.2.2.3	Polarizer convex-concave dot defect, polarizer bubble defect	Size(mm)	S < 5"	5 ≤ S < 10"	10 ≤ S < 15"	S ≥ 15"		Naked eyes /film card /magnifier	
		D ≤ 0.20	Ignored	Ignored	Ignored	Ignored			
		0.20 < D ≤ 0.5	2	2	3	5			
		0.50 < D ≤ 0.8	0	1	2	3			
		0.8 < D ≤ 1.5	0	0	1	2			

 AVDISPLAY		Doc. Name	Inspection Criterion for TFT Products			Ver.	V2.3
Doc. Level	Class 3	Doc. No.	AVD (WI) -00-QA-007			Page	Page 6 of 10
	$D > 1.5\text{mm}$	0	0	0	0		


6.3 Chipping defect

No.	Item	Accepted criterion(mm)				MAJ	MIN
6.3.1	ITO conductive side 	X	/	$\leq 1/8L$	/		√
		Y	$Y \leq 1/6W$	$1/6W < Y \leq 1/4W$	$1/4W < Y$		
		Accept	2	2	0		
6.3.2	Corner chipping (ITO pins position) 	X	/	$\leq 1/6L$	/		√
		Y	$Y \leq 1/2W$	$1/2W < Y \leq W$	$W < Y$		
		Accept	2	1	0		
	Corner chipping occurred in sealed edge position as per 6.3.3; at the same time it should not enter into black border of the frame and the corner chipping effect the electric connection position perform as per 6.3.1.						
6.3.3	Chipping in sealed area (outside chipping)  Chipping in sealed area (inside chipping) 	X	/	$\leq 1/8L$	/		√
		Y (outside chipping)	Not enter into sealant	Enter $Y \leq H$	$H < Y$		
		Y (inside chipping)		Enter $Y \leq 1/2H$	$1/2H < Y$		
		Z	$\leq T$	$\leq 1/2T$	/		
		Accept	2	1	0		
The standards of inner and outer chipping on edge sealing area are same. When the chipping occurred in the opposite of stage, Y as per the chipping on the non-conduction side standard in 6.3.1							
6.3.4	conductive side (back side chipping) 	X	/	$\leq 1/6L$	/		√
		Y	$Y \leq 1/3W$	$1/3W < Y \leq 2/3W$	$2/3W < Y$		
		Accept	2	2	0		

 AVDISPLAY		Doc. Name	Inspection Criterion for TFT Products		Ver.	V2.3	
Doc. Level	Class 3	Doc. No.	AVD (WI) -00-QA-007		Page	Page 7 of 10	
		Chipping into ITO side ,refer to 6.3.1					
6.3.5	Protruding LCD poor cutting and LCD burrs 	X	/	$\leq 1/8L$	/	√	
		Y	$\leq 1/6W$	$1/6W < Y \leq 1/5W$	$1/5W < Y$		
		Z	/	/	/		
		Accept	1	1	1		
		the outside protruding control as per the tolerance of drawing.					
6.3.6	Crack 	Not allow to occur cracks without direction; the crack expand to inside is NG, but to outside is OK (confirmed as per the damaged standard)					√
Remark:1)X means the length of chipping; Y means the width; Z means the thickness; W means the step width of the two glasses; H means the distance from the glass edge to the seal inner edge; t means glass thickness.							

6.4 Backlight components

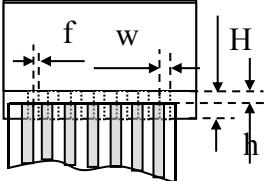
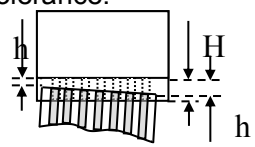
No.	Item	Description	Accepted criterion	MAJ	MIN
6.4.1	No backlight wrong Color	/	Rejected	√	
6.4.2	Color deviation	When powered on, the LCD color differs from its sample and found that the color not conforming to the drawing after testing.	Refer to sample and drawing.		√
6.4.3	Brightness deviation	When powered on, the LCD brightness differs from its sample and is found after testing not conforming to the drawing; or if it conforms to the drawing but the brightness over $\pm 40\%$ than its typical value.	Refer to sample and drawing.		√
6.4.4	Uneven brightness	Uneven on the same LCD and out of the specification of the drawing. The no specification evenness= (the max value-the min value)/ mean value $< 70\%$.	Refer to sample and drawing.		√
6.4.5	Spot/line /scratch	When power on, it has dirty spot, scratches and so on spot and line defects.	Refer to 6.2.2		√


 AVDISPLAY		Doc. Name	Inspection Criterion for TFT Products	Ver.	V2.3
Doc. Level	Class 3	Doc. No.	AVD (WI) -00-QA-007	Page	Page 8 of 10

6.5 Metal frame (Metal Bezel)


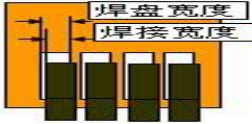
No.	Item	Description	Accepted criterion	MAJ	MIN
6.5.1	Material & surface treatment	Metal frame/surface treatment do not conform to the specifications.	Rejected	√	
6.5.2	Tab twist Unconformity/ Tab not twisted	Wrong twist method or direction and twist tabs are not twisted as required.	Rejected	√	
6.5.3	Bezel paint loss	1.Front surface: Paint peel off and scratch to the bottom Dot: $D \leq 0.5\text{mm}$, exceeds 3; Line: $L \leq 3.0\text{mm}$, $W \leq 0.05\text{mm}$ exceeds 2; 2.Front dent, air bubble and side with paint peeling off scratch to the bottom Dot: $D \leq 1.0\text{mm}$, exceeds 3; Line: $L \leq 10.0\text{mm}$, $W \leq 0.05\text{mm}$, exceeds 2;	Rejected		√
6.5.4	Bezel scratch				√
6.5.5	Painting peel off, discoloration, dent, and scratch				√
6.5.6	Burr	Burr(s) on metal bezel is so long as to get into viewing area.	Rejected		√

6.6 FPC

No.	Item	Description	Accepted criterion	MAJ	MIN
6.6.1	Model & P/N	Material model & P/N	Keep the same with drawing and technical requirement	√	
6.6.2	Dimension/ position	Dimension in drawing spec  Remark: $H = \text{ITO pin length}$ $f = \text{FPC width}$ $W = \text{ITO pin width}$	$f \leq 1/3w$, $h \leq 1/3H$, dimension in drawing spec -> OK Conducive material and ITO/PDA connective area must over than 1/2. Entire dimension must be in spec tolerance. 		√
6.6.3	FPC appearance	Hot pressing material get broken, folding line open; FPC golden finger oxidate, broken, scratch, foreign material which cause line	Broken length < 2mm; FPC line is OK -> Accepted Crack and line broken -> Rejected		√


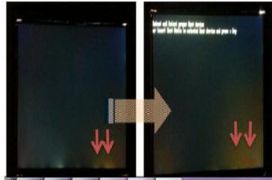
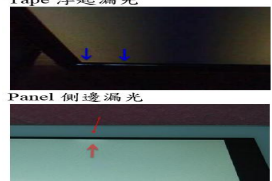
 AVIDISPLAY		Doc. Name	Inspection Criterion for TFT Products	Ver.	V2.3
Doc. Level	Class 3	Doc. No.	AVD (WI) -00-QA-007	Page	Page 9 of 10
		short			
6.6.4	FPC burr	Burr near FPC edge area	When cover line and burr length $\leq 1.0\text{mm}$ -> Accepted		√
6.6.5	FPC falling off	FPC bonding area falling off ; silica gel breaking	Rejected		√
6.6.6	Sealant missing ITO line	Sealant is not covered all ITO line	Rejected	√	
6.6.7	Missing sealant	No sealant	Rejected	√	
6.6.8	Sealant	Sealant height > product total height	Rejected	√	

6.7 SMT

No.	Item	Description	Accepted criterion	MAJ	MIN
6.7.1	Soldering bridge	Solder between adjacent pads and components 	Rejected		√
6.7.2	Solder ball/splash	Solder ball/tin dross causing short circuit at the solder point. There are active solder ball and splash.	Rejected		√
6.7.3	Soldering excursion	Soldering slant > 1/3 soldering pad 	Rejected		√
6.7.4	Component wrong attaching	Component on PCB differs with drawing: wrong one, extra one, lack one, opposite polarity	Rejected	√	
		JUMP short circuit on PCB: extra soldering ,lack soldering.	Rejected	√	
6.7.5	Component falling off	Soldering but component is missing	Rejected	√	
6.7.6	Wrong component	Component model/spec differs from product specification	Rejected	√	

6.8 General Appearance

No.	Item	Description	Accepted criterion	MAJ	MIN
6.8.1	Dimension	According to drawing	Accepted	√	

 AVDISPLAY		Doc. Name	Inspection Criterion for TFT Products	Ver.	V2.3
Doc. Level	Class 3	Doc. No.	AVD (WI) -00-QA-007	Page	Page 10 of 10
6.8.2	Surface stain	Defect mark or label are not removed residual glue, and finger print,etc;	Rejected		√
6.8.3	Assembly foreign material	Dot/linear stain after assembly backlight and diffuse film TP assembly foggy stain	Invisible when power on->OK Refer to 6.2.2 dot/line spec		√
6.8.4	Mixture	Different model product in the same shipment	Rejected	√	
6.8.5	Product mark	Missing, unclear, incorrect, or misplaced part	Rejected		√
6.8.6	Component mark	Silk screen mark clear, resistance measured value in spec	Accepted (Refer to customer special requirement)		√
6.8.7	Newton's rings	Area<1/6 screen area quantity≤1	Accepted		√
6.8.8	Mura	1.In black display ND 5% invisible ->OK; visible->NG 2.Naked eyes inspection RGB display invisible Black display, area<1/4 screen area	Refer to limited sample 		√
6.8.9	Light leak	1.LCD edge(near backlight) shadow by LCD lamps irregular illuminate 2.Judge in black/white/gray display (slight leaky is yellowish, greenish, bluefish ->NG) ;	Refer to limited sample 		√
6.8.10	Polarizer	1.Polarizer slant.Cover VA and not over LCD edge 2.No unmovable stain or finger print in polarizer VA 3.Bubble/warped but not enter VA	Accepted		√
6.8.11	TP defect	1.TP crack 2.TP stain(fogy&unremovable) 3.TP glue overflow to VA	Rejected		√

Remark: Anything which is not clearly defined in 6.5~6.8 should refer to IPC-A-610E.Consumer Electronics, Non-consumer Electronics refer to class 1 and Industrial, Automobile refer to Class 2.

7. Others

Items not specified in this document or released on compromise should be inspected with reference to mutual agreement and limit samples.